

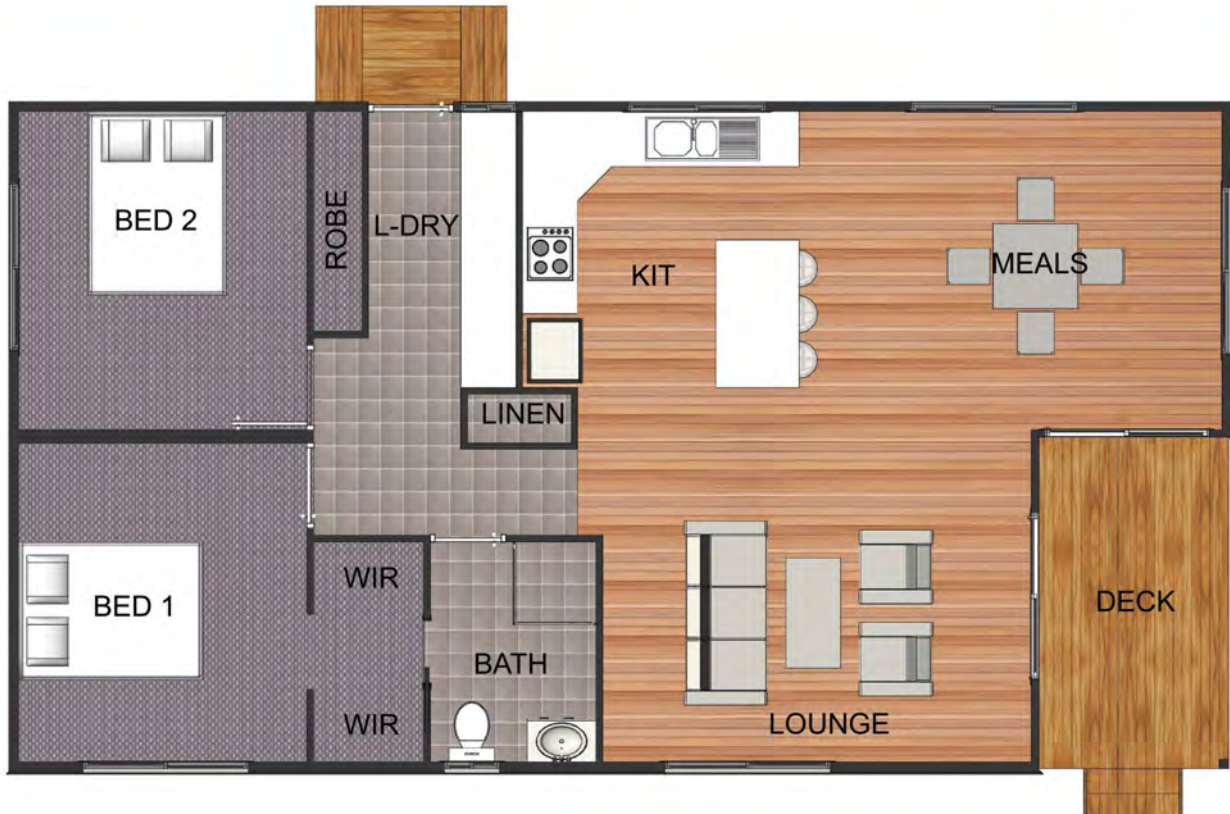
# coastal CABINS

## Quondola

The Quondola features two double sized bedrooms with the main bedroom including a walk in robe through to the two-way bathroom/ ensuite. Spacious open plan kitchen, dining and living areas.



The Quondola Artist's Impression ©



**coastalBUILDERS**

*love where you live... live where you love*

Andrew Holt • 0414 980 572 • email [info@coastalbuildersnsw.com.au](mailto:info@coastalbuildersnsw.com.au) • [www.coastalbuildersnsw.com.au](http://www.coastalbuildersnsw.com.au)

Custom designs are site specific and will be quoted on an individual basis. Facades in this brochure are for illustrative purposes only. Plans are copyright in part and whole by Coastal Builders (NSW) Pty Ltd. Elevations are provided as a guide only. All width and length dimensions do not include eaves where shown on the floor plan. Artist's impressions and any photographs appearing in Coastal Builders' brochures of finished homes are indicative only and do not constitute an offer of what will be included in any individual home. Please refer to your building contract for specific design and inclusion details for your personal new home. Coastal Builders (NSW) Pty Ltd ABN - 67 103 560 596 ACN - 103 560 596 LIC # - 168674C